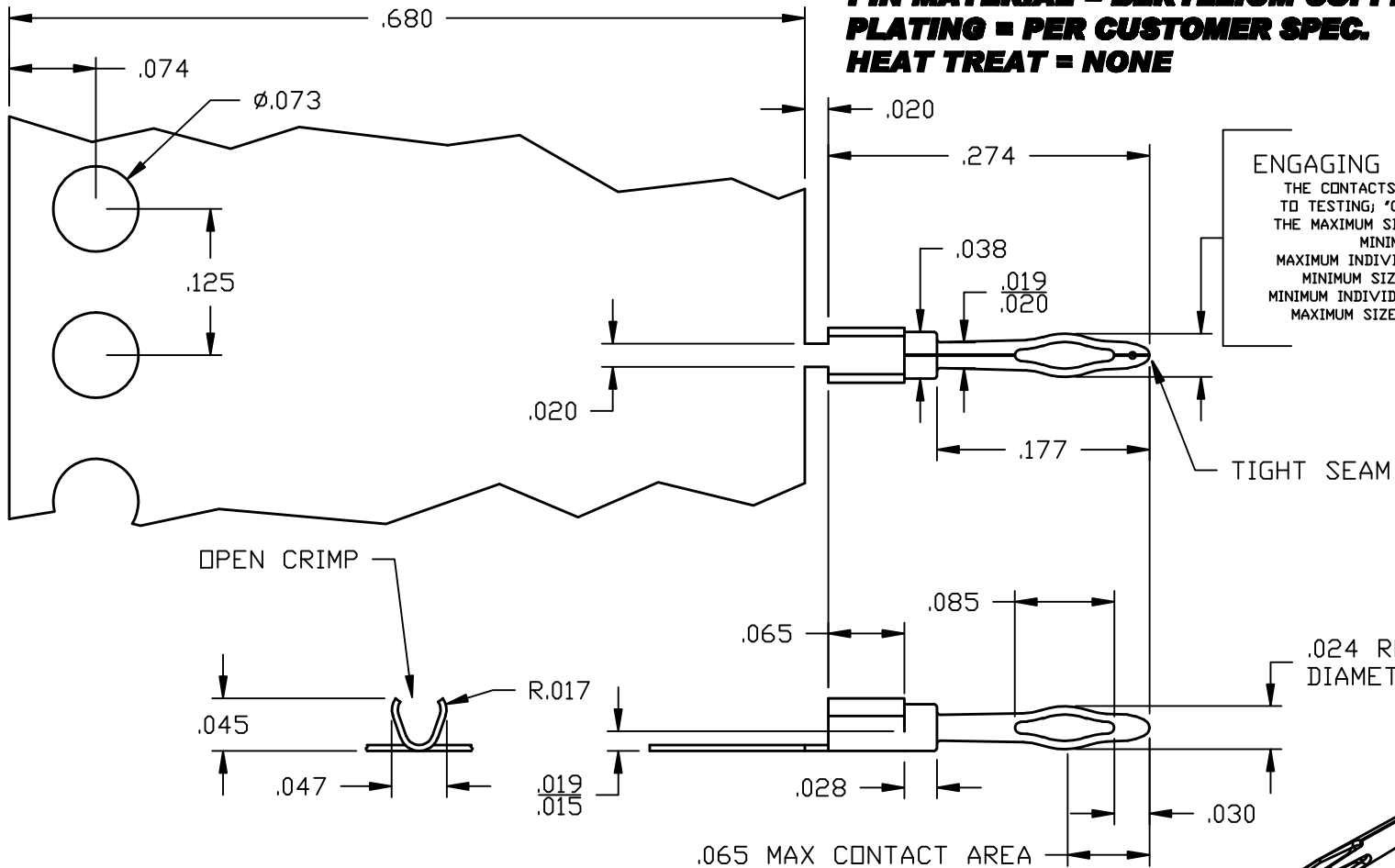


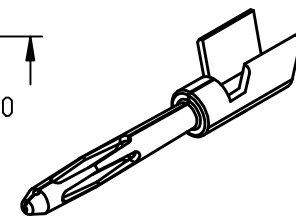
**PRECISION STAMPINGS, INC.**  
**500 EGAN AVE. BEAUMONT, CA 92223 (951)845-1174**

REV CHART (ALSO SEE REVERSE SIDE)			
'TOOL' REV-DATE	'PRODUCT' REV-DATE	DESCRIPTION/REMARKS	INI- TIALS
A 10-18-99	B 11-8-01	ADDED .024 REF. DIM.	BLS
A 10-18-99	C 5/12/09	UPDATED	BLS

**PIN MATERIAL = .005 THICK**  
**PIN MATERIAL = BERYLLIUM COPPER C17200 1/2 HARD**  
**PLATING = PER CUSTOMER SPEC.**  
**HEAT TREAT = NONE**



**ENGAGING & SEPARATING FORCES**  
 THE CONTACTS ARE TO BE 'CONDITIONED' PRIOR TO TESTING; 'CONDITION' BY FIRST MATING WITH THE MAXIMUM SIZE TEST BUSHING, THEN WITH THE MINIMUM SIZE TEST BUSHING.  
 MAXIMUM INDIVIDUAL ENGAGING FORCE, USING THE MINIMUM SIZE TEST BUSHING: 6oz., 0.37LB.  
 MINIMUM INDIVIDUAL SEPARATING FORCE, USING THE MAXIMUM SIZE TEST BUSHING: 0.5oz., 0.032LB.



**OPEN CRIMP, CONTACT PIN**  
**CONTACT SIZE 24**

DIMENSIONS IN INCHES  
 UNLESS OTHERWISE  
 SPECIFIED

.X = FRACTION  
 .XX =  $\pm .010$   
 .XXX =  $\pm .005$

**PIN**

**PART NUMBER**

**16216-24**